



OPOS CONTROL

Application

Development Guide

Contents

SECTION 1	HOW TO SET UP.....	1
SECTION 2	CAUTIONS.....	2
2-1.	POS Printer	2
2-2.	Cash drawer	2
SECTION 3	DIRECTIO USAGE	3
3-1.	POS Printer	3
3-2.	Cash drawer.....	3
SECTION 4	RESULTCODE LIST.....	4
4-1.	POS Printer	4
4-2.	Cash drawer.....	9
SECTION 5	PROPERTY LIST	10
5-1.	POS Printer	10
5-2.	Cash drawer.....	11
SECTION 6	RELEASE HISTORY	12

SECTION 1 HOW TO SET UP

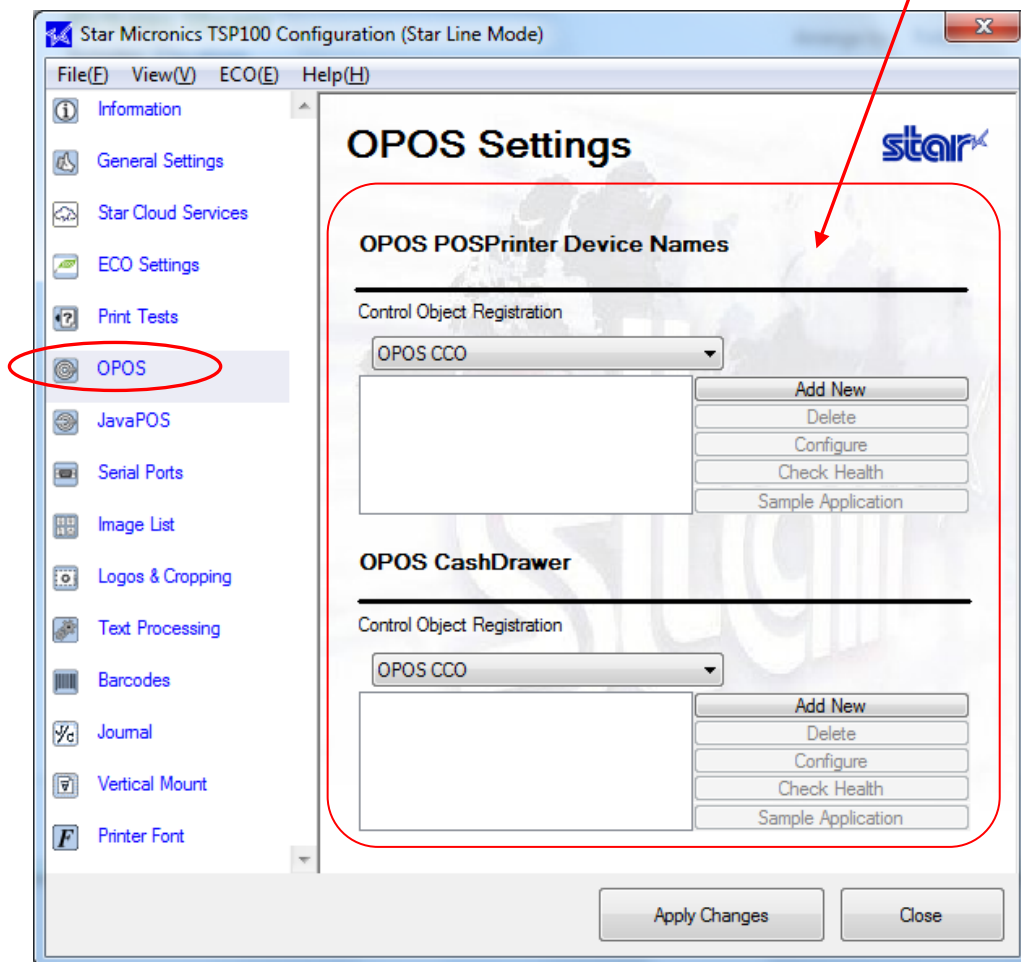
From the Windows Start menu, select **Programs, All Programs or All Apps – StarMicronics – Configuration Utility TSP100.**

The OPOS printer driver is included with the Windows driver installation. However, before it can be used with an OPOS application, the printer must be registered.

If a cash drawer is connected to the printer, the cash drawer must also be registered. Registration of the printer and cash drawer is accomplished through the Configuration Utility.

Click the 'OPOS' tab on the left side in Configuration Utility menu below to make the configuration.

Here you will enter the detail configuration.



For OPOS Setting details, see the *TSP100 futurePRNT Software Manual*.

Note: Before registering a printer or cash drawer, confirm the control object registration status. The registration procedure is different depending on the control object registration status.

SECTION 2 CAUTIONS

2-1. POS Printer

- 1) Some printers may have the property and the OPOS escape sequence which can be set only at the top of the lines and might be limited at the rotation printing. Refer to the Hardware Manual and Control Guide Book of each device for more detail.

2-2. Cash drawer

- 1) During the connected printer is in busy status (e.g. Paper End, Cover Open, etc.), Cash Drawer can not be opened. ResultCode = OPOS_E_TIMEOUT will be may happens.
- 2) There is no Beep sound on the WaitForDrawerClose method. 2

SECTION 3 DIRECTIO USAGE

3-1. POS Printer

DirectIO Method

None

DirectIO Event

None

3-2. Cash drawer

DirectIO Method

None

DirectIO Event

None

SECTION 4 RESULTCODE LIST

4-1. POS Printer

Method	ResultCode	ResultCodeExtended
Open	OPOS SUCCESS	-
	OPOS E NOSERVICE	-
	OPOS E ILLEGAL	-
	OPOS E NOEXIST	-
Close	OPOS SUCCESS	-
	OPOS E CLOSED	-
ClaimDevice	OPOS SUCCESS	-
	OPOS E CLOSED	-
	OPOS E ILLEGAL	-
	OPOS E TIMEOUT	-
ReleaseDevice	OPOS SUCCESS	-
	OPOS E CLOSED	-
	OPOS E ILLEGAL	-
CheckHealth	OPOS SUCCESS	-
	OPOS E CLOSED	-
	OPOS E FAIRULE	-
	OPOS E NOTCLAIMED	-
	OPOS E DISABLED	-
	OPOS E ILLEGAL	-
	OPOS E BUSY	-
ClearOutput	OPOS SUCCESS	-
	OPOS E CLOSED	-
	OPOS E DISABLED	-
	OPOS E NOTCLAIMED	-
CompareFirmWareVersion	OPOS E BUSY	-
	OPOS E CLOSED	-
	OPOS E DISABLED	-
	OPOS E NOTCLAIMED	-
	OPOS E ILLEGAL	-
DirectIO	OPOS E CLOSED	-
	OPOS E ILLEGAL	-
ResetStatistics	OPOS E BUSY	-
	OPOS E CLOSED	-
	OPOS E DISABLED	-
	OPOS E NOTCLAIMED	-
	OPOS E ILLEGAL	-
RetrieveStatistics	OPOS E BUSY	-
	OPOS E CLOSED	-
	OPOS E DISABLED	-
	OPOS E NOTCLAIMED	-
	OPOS E ILLEGAL	-
UpdateFirmware	OPOS E BUSY	-
	OPOS E CLOSED	-
	OPOS E DISABLED	-
	OPOS E NOTCLAIMED	-
	OPOS E ILLEGAL	-

Method	ResultCode	ResultCodeExtended
UpdateStatistics	OPOS E BUSY	-
	OPOS E CLOSED	-
	OPOS E DISABLED	-
	OPOS E NOTCLAIMED	-
	OPOS E ILLEGAL	-
PrintNormal	OPOS SUCCESS	-
	OPOS E CLOSED	-
	OPOS E NOTCLAIMED	-
	OPOS E DISABLED	-
	OPOS E ILLEGAL	-
	OPOS E NOHARDWARE	-
	OPOS E OFFLINE	-
	OPOS E FAIRULE	-
	OPOS E TIMEOUT	-
	OPOS E BUSY	-
	OPOS_EXTENDED	OPOS EPTR COVER OPEN
		OPOS EPTR JRN EMPTY
		OPOS EPTR REC EMPTY
		OPOS EPTR SLP EMPTY
PrintTwoNormal	OPOS E CLOSED	-
	OPOS E NOTCLAIMED	-
	OPOS E DISABLED	-
	OPOS E ILLEGAL	-
	OPOS E BUSY	-
PrintImmediate	OPOS SUCCESS	-
	OPOS E CLOSED	-
	OPOS E NOTCLAIMED	-
	OPOS E DISABLED	-
	OPOS E ILLEGAL	-
	OPOS E NOHARDWARE	-
	OPOS E OFFLINE	-
	OPOS E FAIRULE	-
	OPOS E TIMEOUT	-
	OPOS_EXTENDED	OPOS EPTR COVER OPEN
		OPOS EPTR JRN EMPTY
		OPOS EPTR REC EMPTY
		OPOS EPTR SLP EMPTY
BeginInsertion	OPOS SUCCESS	-
	OPOS E CLOSED	-
	OPOS E NOTCLAIMED	-
	OPOS E DISABLED	-
	OPOS E ILLEGAL	-
	OPOS E TIMEOUT	-
	OPOS E BUSY	-
EndInsertion	OPOS SUCCESS	-
	OPOS E CLOSED	-
	OPOS E NOTCLAIMED	-
	OPOS E DISABLED	-
	OPOS E ILLEGAL	-
	OPOS E BUSY	-
	OPOS E EXTENDED	OPOS EPTR SLP EMPTY

Method	ResultCode	ResultCodeExtended
BeginRemoval	OPOS_SUCCESS	-
	OPOS_E_CLOSED	-
	OPOS_E_NOTCLAIMED	-
	OPOS_E_DISABLED	-
	OPOS_E_ILLEGAL	-
	OPOS_E_TIMEOUT	-
	OPOS_E_BUSY	-
EndRemoval	OPOS_SUCCESS	-
	OPOS_E_CLOSED	-
	OPOS_E_NOTCLAIMED	-
	OPOS_E_DISABLED	-
	OPOS_E_ILLEGAL	-
	OPOS_E_BUSY	-
	OPOS_E_EXTENDED	OPOS_EPTR_SLP_FORM
CutPaper	OPOS_SUCCESS	-
	OPOS_E_CLOSED	-
	OPOS_E_NOTCLAIMED	-
	OPOS_E_DISABLED	-
	OPOS_E_ILLEGAL	-
	OPOS_E_NOHARDWARE	-
	OPOS_E_OFFLINE	-
	OPOS_E_TIMEOUT	-
	OPOS_E_BUSY	-
	OPOS_EXTENDED	OPOS_EPTR_COVER_OPEN OPOS_EPTR_REC_EMPTY
RotatePrint	OPOS_SUCCESS	-
	OPOS_E_CLOSED	-
	OPOS_E_NOTCLAIMED	-
	OPOS_E_DISABLED	-
	OPOS_E_ILLEGAL	-
	OPOS_E_NOHARDWARE	-
	OPOS_E_OFFLINE	-
	OPOS_E_TIMEOUT	-
	OPOS_E_BUSY	-
	OPOS_EXTENDED	OPOS_EPTR_COVER_OPEN
		OPOS_EPTR_JRN_EMPTY
		OPOS_EPTR_REC_EMPTY
		OPOS_EPTR_SLP_EMPTY
PrintBarCode	OPOS_SUCCESS	-
	OPOS_E_CLOSED	-
	OPOS_E_NOTCLAIMED	-
	OPOS_E_DISABLED	-
	OPOS_E_ILLEGAL	-
	OPOS_E_NOHARDWARE	-
	OPOS_E_OFFLINE	-
	OPOS_E_TIMEOUT	-
	OPOS_E_BUSY	-
	OPOS_EXTENDED	OPOS_EPTR_COVER_OPEN
		OPOS_EPTR_REC_EMPTY
		OPOS_EPTR_SLP_EMPTY

Method	ResultCode	ResultCodeExtended
PrintBitmap	OPOS_SUCCESS	-
	OPOS_E_CLOSED	-
	OPOS_E_NOTCLAIMED	-
	OPOS_E_DISABLED	-
	OPOS_E_ILLEGAL	-
	OPOS_E_NOHARDWARE	-
	OPOS_E_OFFLINE	-
	OPOS_E_NOEXIST	-
	OPOS_E_TIMEOUT	-
	OPOS_E_BUSY	-
	OPOS_EXTENDED	OPOS_EPTR_TOOBIG
		OPOS_EPTR_COVER_OPEN
		OPOS_EPTR_BADFORMAT
		OPOS_EPTR_REC_EMPTY
		OPOS_EPTR_SLP_EMPTY
TransactionPrint	OPOS_SUCCESS	-
	OPOS_E_CLOSED	-
	OPOS_E_NOTCLAIMED	-
	OPOS_E_DISABLED	-
	OPOS_E_ILLEGAL	-
	OPOS_E_NOHARDWARE	-
	OPOS_E_OFFLINE	-
	OPOS_E_TIMEOUT	-
	OPOS_E_BUSY	-
	OPOS_EXTENDED	OPOS_EPTR_COVER_OPEN
		OPOS_EPTR_JRN_EMPTY
		OPOS_EPTR_REC_EMPTY
		OPOS_EPTR_SLP_EMPTY
ValidateData	OPOS_SUCCESS	-
	OPOS_E_CLOSED	-
	OPOS_E_NOTCLAIMED	-
	OPOS_E_DISABLED	-
	OPOS_E_ILLEGAL	-
	OPOS_E_FAILURE	-
	OPOS_EXTENDED	-
SetBitmap	OPOS_SUCCESS	-
	OPOS_E_CLOSED	-
	OPOS_E_NOTCLAIMED	-
	OPOS_E_DISABLED	-
	OPOS_E_ILLEGAL	-
	OPOS_E_NOEXIST	-
	OPOS_EXTENDED	OPOS_EPTR_TOOBIG OPOS_EPTR_BADFORMAT
SetLogo	OPOS_SUCCESS	-
	OPOS_E_CLOSED	-
	OPOS_E_NOTCLAIMED	-
	OPOS_E_DISABLED	-
	OPOS_E_ILLEGAL	-

Method	ResultCode	ResultCodeExtended
ChangePrintSide	OPOS E CLOSED	-
	OPOS E NOTCLAIMED	
	OPOS E DISABLED	
	OPOS E BUSY	
	OPOS E ILLEGAL	-
MarkFeed	OPOS E CLOSED	-
	OPOS E NOTCLAIMED	
	OPOS E DISABLED	
	OPOS E BUSY	
	OPOS E ILLEGAL	-
ClearPrintArea	OPOS E CLOSED	-
	OPOS E NOTCLAIMED	
	OPOS E DISABLED	
	OPOS E BUSY	
	OPOS E ILLEGAL	-
PageModePrint	OPOS E CLOSED	-
	OPOS E NOTCLAIMED	
	OPOS E DISABLED	
	OPOS E BUSY	
	OPOS E ILLEGAL	-
PrintMemoryBitmap	OPOS E CLOSED	-
	OPOS E NOTCLAIMED	
	OPOS E DISABLED	
	OPOS E BUSY	
	OPOS E ILLEGAL	-
DrawRuledLine	OPOS E CLOSED	-
	OPOS E NOTCLAIMED	
	OPOS E DISABLED	
	OPOS E BUSY	
	OPOS E ILLEGAL	-

4-2. Cash drawer

Method	ResultCode	ResultCodeExtended
Open	OPOS SUCCESS	-
	OPOS E NOSERVICE	-
	OPOS E ILLEGAL	-
	OPOS E NOEXIST	-
Close	OPOS SUCCESS	-
	OPOS E CLOSED	-
ClaimDevice	OPOS SUCCESS	-
	OPOS E CLOSED	-
	OPOS E ILLEGAL	-
	OPOS E TIMEOUT	-
ReleaseDevice	OPOS SUCCESS	-
	OPOS E CLOSED	-
	OPOS E ILLEGAL	-
CheckHealth	OPOS SUCCESS	-
	OPOS E CLOSED	-
	OPOS E CLAIMED	-
	OPOS E DISABLED	-
	OPOS E ILLEGAL	-
	OPOS E BUSY	-
CompareFirmWareVersion	OPOS E CLOSED	-
	OPOS E ILLEGAL	-
DirectIO	OPOS E CLOSED	-
	OPOS E ILLEGAL	-
ResetStatistics	OPOS E CLOSED	-
	OPOS E ILLEGAL	-
RetrieveStatistics	OPOS E CLOSED	-
	OPOS E ILLEGAL	-
UpdateFirmware	OPOS E CLOSED	-
	OPOS E ILLEGAL	-
UpdateStatistics	OPOS E CLOSED	-
	OPOS E ILLEGAL	-
OpenDrawer	OPOS SUCCESS	-
	OPOS E CLOSED	-
	OPOS E CLAIMED	-
	OPOS E DISABLED	-
	OPOS E NOHARDWARE	-
	OPOS E OFFLINE	-
	OPOS E TIMEOUT	-
	OPOS E BUSY	-
WaitForDrawerClose	OPOS SUCCESS	-
	OPOS E CLOSED	-
	OPOS E CLAIMED	-
	OPOS E DISABLED	-
	OPOS E BUSY	-

SECTION 5 PROPERTY LIST

5-1. POS Printer

Property	TSP143U
CapCompareFirmwareVersion	FALSE
CapPowerReporting	OPOS_PR_ADVANCED
CapStatisticsReporting	FALSE
CapUpdateFirmware	FALSE
CapUpdateStatistics	FALSE
CapCharacterSet	PTR_CCS_ASCII
CapConcurrentJrnRec	FALSE
CapConcurrentJrnSlp	FALSE
CapConcurrentPageMode	FALSE
CapConcurrentRecSlp	FALSE
CapCoverSensor	TRUE
CapMapCharacterSet	TRUE
CapTransaction	TRUE
CapJrnPresent	FALSE
CapJrn2Color	FALSE
CapJrnBold	FALSE
CapJrnDhigh	FALSE
CapJrnDwide	FALSE
CapJrnDwideDhigh	FALSE
CapJrnEmptySensor	FALSE
CapJrnItalic	FALSE
CapJrnNearEndSensor	FALSE
CapJrnUnderline	FALSE
CapJrnCartridgeSensor	0
CapJrnColor	0
CapRecPresent	TRUE
CapRec2Color	FALSE
CapRecBarCode	TRUE
CapRecBitmap	TRUE
CapRecBold	TRUE
CapRecDhigh	TRUE
CapRecDwide	TRUE
CapRecDwideDhigh	TRUE
CapRecEmptySensor	TRUE
CapRecItalic	FALSE
CapRecLeft90	FALSE
CapRecNearEndSensor	FALSE
CapRecPapercut	TRUE

Property	TSP143U
CapRecRight90	FALSE
CapRecRotate180	TRUE
CapRecStamp	FALSE
CapRecUnderline	TRUE
CapRecCartridgeSensor	0
CapRecColor	PTR_COLOR_PRIMARY
CapRecMarkFeed	0
CapRecPageMode	FALSE
CapRecRuledLine	FALSE
CapSlpPresent	FALSE
CapSlpFullslip	FALSE
CapSlp2Color	FALSE
CapSlpBarCode	FALSE
CapSlpBitmap	FALSE
CapSlpBold	FALSE
CapSlpDhigh	FALSE
CapSlpDwide	FALSE
CapSlpDwideDhigh	FALSE
CapSlpEmptySensor	FALSE
CapSlpItalic	FALSE
CapSlpLeft90	FALSE
CapSlpNearEndSensor	FALSE
CapSlpRight90	FALSE
CapSlpRotate180	FALSE
CapSlpUnderline	FALSE
CapSlpBothSidesPrint	FALSE
CapSlpCartridgeSensor	0
CapSlpColor	0
CapSlpPageMode	FALSE
CapSlpRuledLine	FALSE

5-2. Cash drawer

Property	TSP143U
CapCompareFirmwareVersion	FALSE
CapPowerReporting	OPOS_PR_ADVANCED
CapStatisticsReporting	FALSE
CapUpdateFirmware	FALSE
CapUpdateStatistics	FALSE
CapStatus	TRUE
CapStatusMultiDrawerDetect	FALSE

SECTION 6 RELEASE HISTORY

Rev. No.	Date (Month/Year)	Contents
Rev. 1.0	Jul. 2009	New Release
Rev. 1.1	Oct. 2021	Added support for futurePRNT 7.6

Remarks:

- 1) Reproduction of any part of this documentation is prohibited.
- 2) The contents of this documentation are subject to change without notice.
- 3) We can assume no responsibility for any results which may come out of the usage instructed in this documentation.

Trademarks:

All company and product names are trademarks or registered trademarks of their respective owners.

(<https://www.star-m.jp/eng/trademarks.html>)



<https://www.star-m.jp/eng>